



NTSC U/C

PlayStation



SLUS-01507

RESCUE PATROL FIRE COPTER™



PVP Premium Value Product



CRAVE ENTERTAINMENT
www.cravegames.com

WARNING: READ BEFORE USING YOUR PLAYSTATION® GAME CONSOLE.

A very small percentage of individuals may experience epileptic seizures when exposed to certain light patterns or flashing lights. Exposure to certain patterns or backgrounds on a television screen or while playing video games, including games played on the PlayStation game console, may induce an epileptic seizure in these individuals. Certain conditions may induce previously undetected epileptic symptoms even in persons who have no history of prior seizures or epilepsy. If you, or anyone in your family, has an epileptic condition, consult your physician prior to playing. If you experience any of the following symptoms while playing a video game – dizziness, altered vision, eye or muscle twitches, loss of awareness, disorientation, any involuntary movement, or convulsions – IMMEDIATELY discontinue use and consult your physician before resuming play.

WARNING TO OWNERS OF PROJECTION TELEVISIONS:

Do not connect your PlayStation game console to a projection TV without first consulting the user manual for your projection TV, unless it is of the LCD type. Otherwise, it may permanently damage your TV screen.

USE OF UNOFFICIAL PRODUCT:

The use of unofficial products and peripherals may damage your PlayStation game console and invalidate your console warranty.

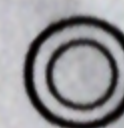
HANDLING YOUR PLAYSTATION DISC:

- This compact disc is intended for use only with the PlayStation game console.
- Do not bend it, crush it or submerge it in liquids.
- Do not leave it in direct sunlight or near a radiator or other source of heat.
- Be sure to take an occasional rest break during extended play.
- Keep this compact disc clean. Always hold the disc by the edges and keep it in its protective case when not in use. Clean the disc with a lint-free, soft, dry cloth, wiping in straight lines from center to outer edge. Never use solvents or abrasive cleaners.

Rescue Copter™

Contents

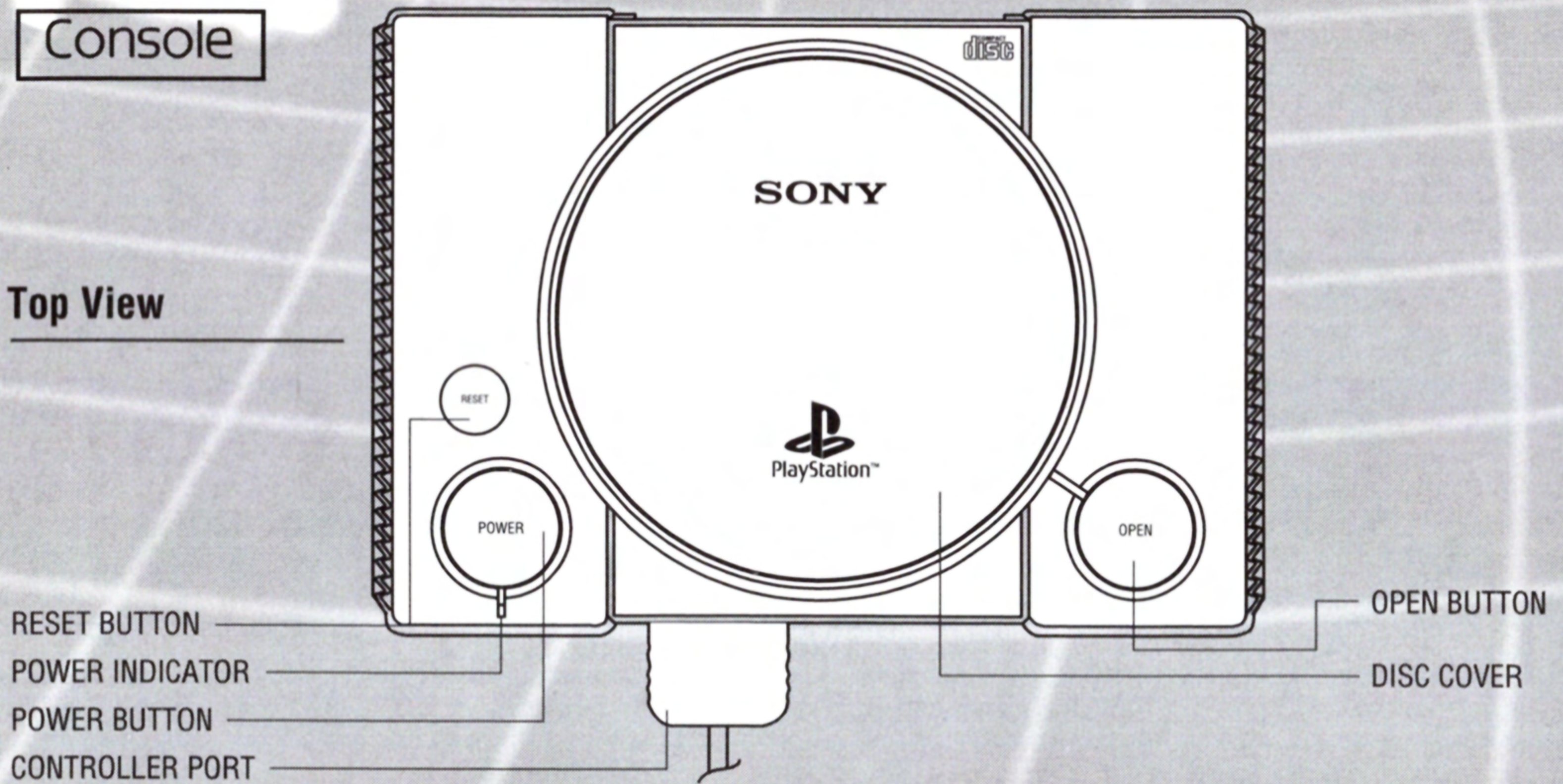
System Setup	2
Controller	3
Getting Started	4
Controls	5
Introduction	6
Main Menu	7
Options	8
Game Modes	9
Types of Missions	12
Credits	17
Notes	18
Warranty	21



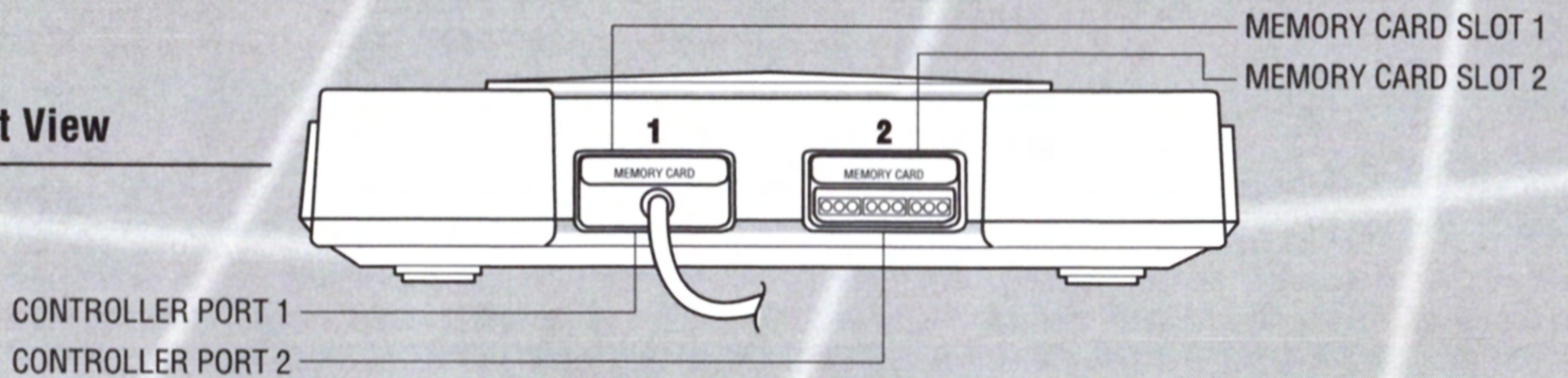
System Setup

Console

Top View

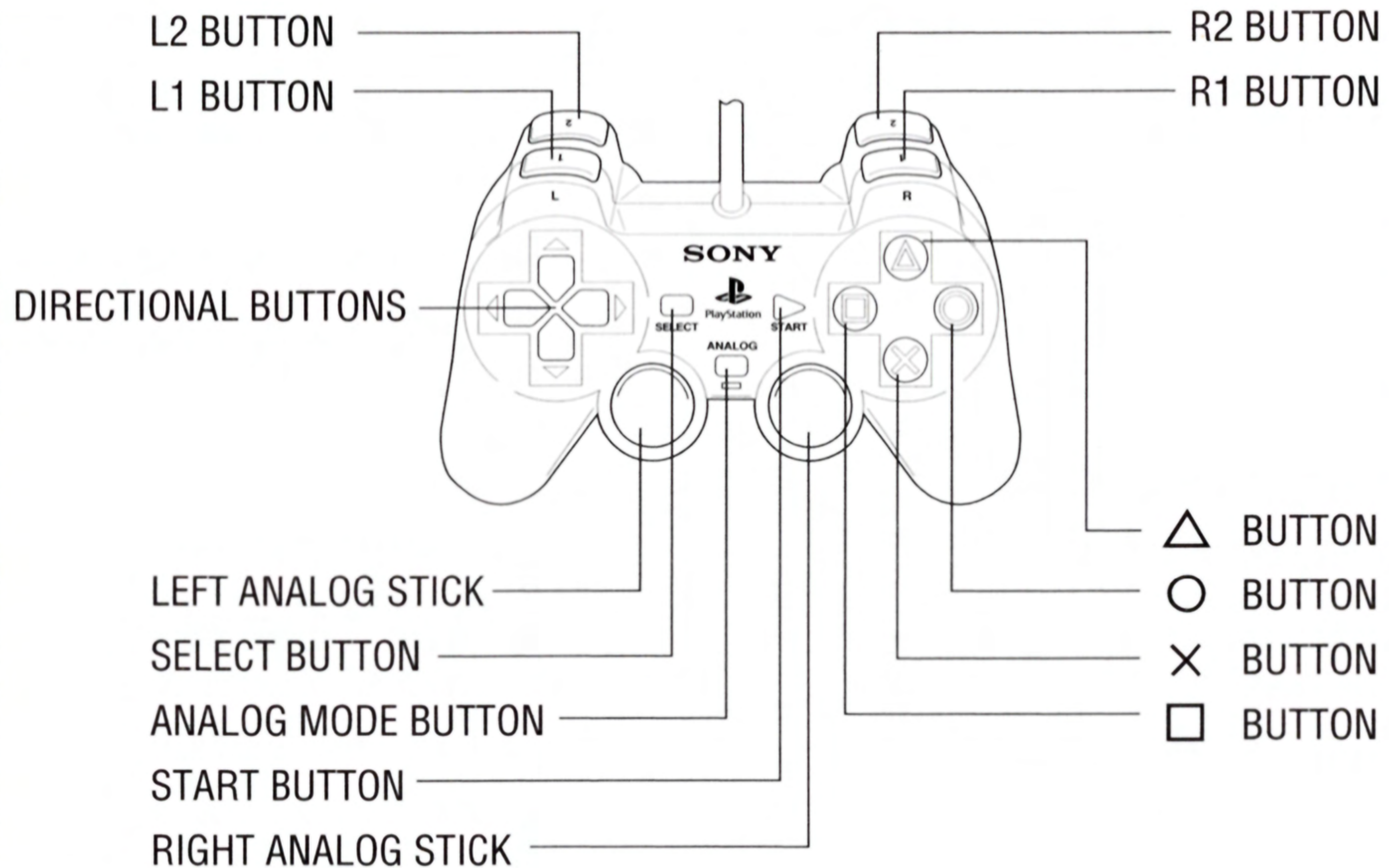


Front View



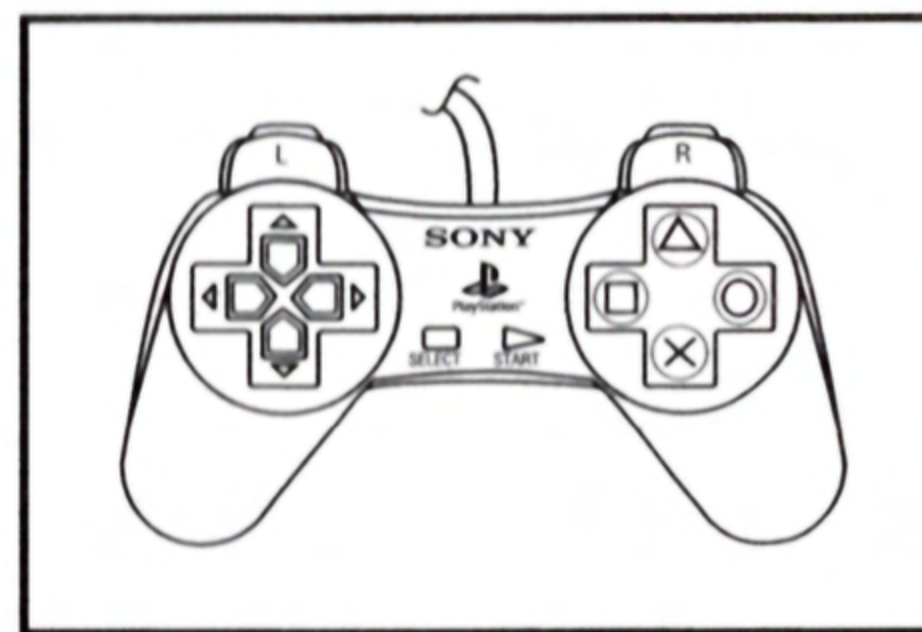
Controller

DUALSHOCK® analog controller



Compatible only in Digital and Analog mode

NOTE: You may have a controller that looks like this, if so please follow the digital instructions outlined above.



Getting Started

Thank you for purchasing *Rescue Copter*[™].

1. Before inserting the CD, make sure that your PlayStation[®] is switched off. The system may be damaged if the CD is inserted while your PlayStation[®] system is on.
2. Insert the *Rescue Copter*[™] CD into the PlayStation[®] CD tray.
3. Press the POWER button to turn on the PlayStation[®].
4. The PlayStation[®] logo screen and licensing screen should appear, followed by the *Rescue Copter*[™] introduction screen. If you experience problems, please repeat steps 1 and 2.
5. Press the START button and begin the game!

Controls

Crew Up/Down	L2 button
Ladder	L1 or R1 button
Cyclic/ Pitch and Direction	Directional buttons
Action	R2 button
Pickup Items/People	X or △ buttons
Change View	SELECT button
Pause	START button
Raises and Lowers Helicopter	Left analog stick
Accelerate and Reverse	Right analog stick

Menu Screens

In all menu screens, use the Directional buttons to highlight an available option and the **X** button to select.

Introduction



Welcome to *Rescue Copter*[™], the latest and greatest helicopter game for the PlayStation[®]. Choose your copter, pick a mission, and get ready to fly! Good luck and happy flying!

Main Menu

Here is where you choose your options and you've got a lot of them! Press the Directional button Up or Down to scroll through available game options and pick what suits you best.



NEW GAME

Select this option to start the selection process of the various game modes.

LOAD GAME

Load a previously saved game from your memory card.

CONFIGURATIONS

Select this option to change control set up and/or the sound effects (see pg. 8).

CONTINUE

Continue the game in progress.

Options

KEY CONFIGURATIONS SCREEN

Select either Easy or Expert for the difficulty setting.

Easy setting: Your helicopter does not take damage when crashing into buildings and there is no effect from the wind.

Expert setting: Your helicopter takes damage and the wind effects the way your helicopter responds to your commands.

SOUND CONFIGURATIONS SCREEN

Select the game to be played in stereo or mono. You can test the Sound Effects and Background Music and also adjust the settings and volumes with the sliding scale.

Game Modes 1.1



FREE FLIGHT

Fly freely around the world. Practice your flying skills. As soon as you clear the mission in mission mode, more maps will be made available.

Game Modes 1.2

PRACTICE

Practice your skills with five basic missions where you practice taking off, landing, and extinguishing fires. The helicopter best suited for each mission is automatically selected for you.



The following are descriptions of the five basic missions:

Taking off/Landing – Taking off from the helicopter pad and landing back on the helicopter pad.

Hovering – Taking off from a helicopter pad, hovering for 5 seconds, and landing back on the helicopter pad.

Flying – Gathering the medals scattered in the sky and landing back on the helicopter pad.

Cargo Transportation – Hanging and carrying the two containers placed near the helicopter pad. Only one container can be carried per transport. This practice plays an important role in Cargo Transportation Mission so be prepared.

Extinguishing Fire – Spraying foam on housing in the cottage areas. Extinguishing fires while hovering requires more advanced flight techniques.

Game Modes 1.3

MISSION

The game offers you 15 action-packed missions. When each mission is cleared, you are given a Gold, Silver, or Bronze medal depending on the time it took to complete the mission.



Failing the mission

You will fail the mission when the helicopter's power level reaches 0 caused by a building crash or ground crash. When asked (Continue?), select (Yes) to repeat the same mission before the countdown reaches 0.

Clearing the mission

When each mission is cleared, Result Screen appears and displays Gold, Silver, or Bronze medal depending on the time it took to complete the mission. Press the **X** button to view a replay video of the successful mission story.

Types of Missions 1.1

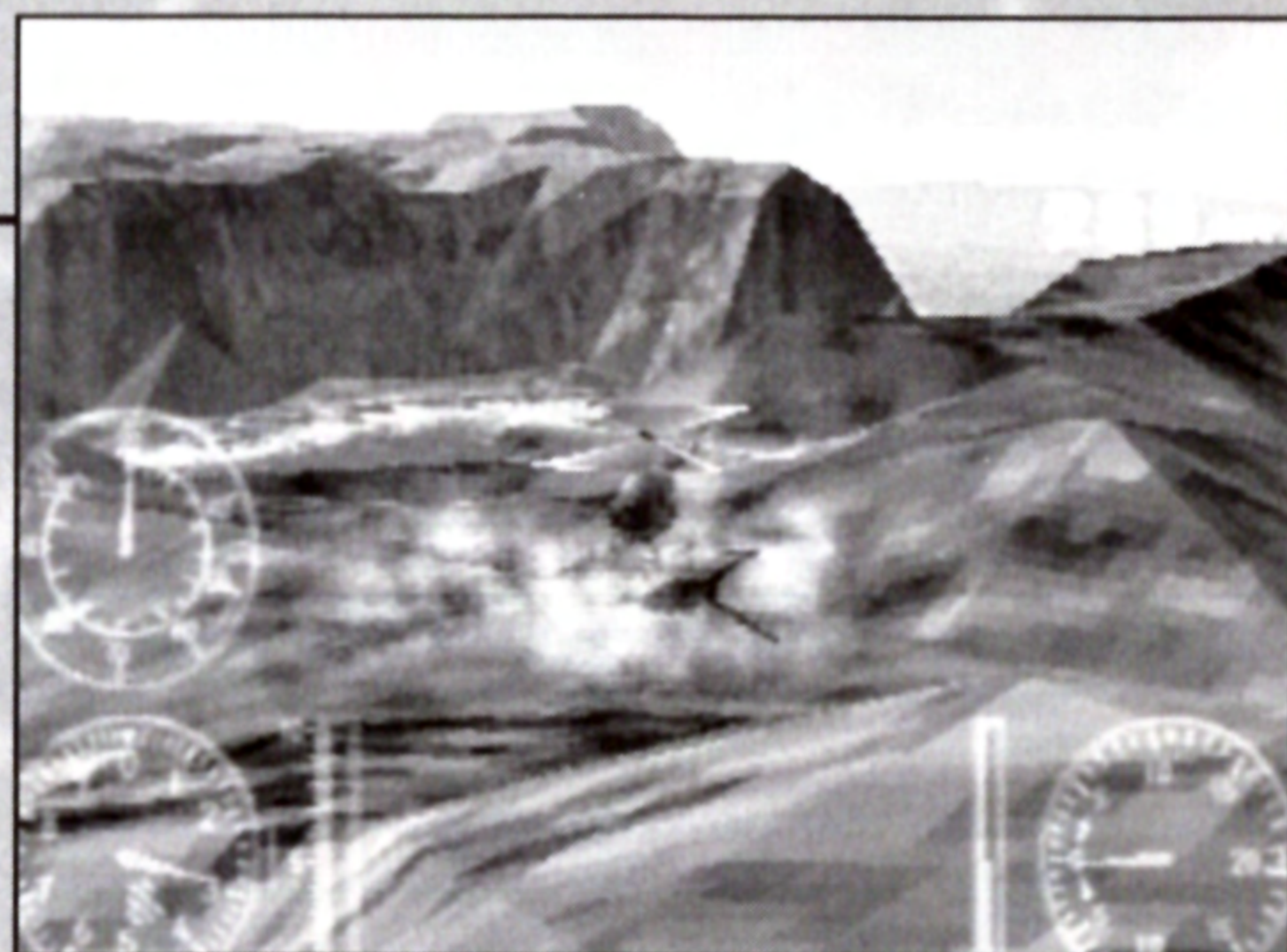
FLIGHT OPERATION MISSION

Continue flying the suggested route. This mission is completed after landing onto the helicopter pad. Mission 1-1 "Sightseeing Flight" is applicable to this mission.



CROP-DUSTING MISSION

Crop-dust onto the specified location. This mission is completed after all the crop-dusting is finished and landing onto the specified helicopter pad. Mission 1-2 "Crop-dusting" is applicable to this mission.



Types of Missions 1.2



TREASURE HUNTING MISSION

Look for all the hidden medals all over the islands within a time limit. This mission is completed after collecting all the medals and landing onto the helicopter pad in time. This is the only mission where a target is not specified. Mission 2-1 "Treasure Hunting" is applicable to this mission.

Types of Missions 1.3

CARGO TRANSPORTATION MISSION

Hang and carry a cargo container to the specified location and unload it in space specified. As the levels in this mission get higher, the less space to unload the container will be provided. Because of the little space, piling up the containers will be necessary.



How to hook

To carry a container, you need to hook and pull it up in the air. First, keep hovering over the container. Take up the rope. Then, control the altitude of the helicopter until the tip of the hook touches the container.

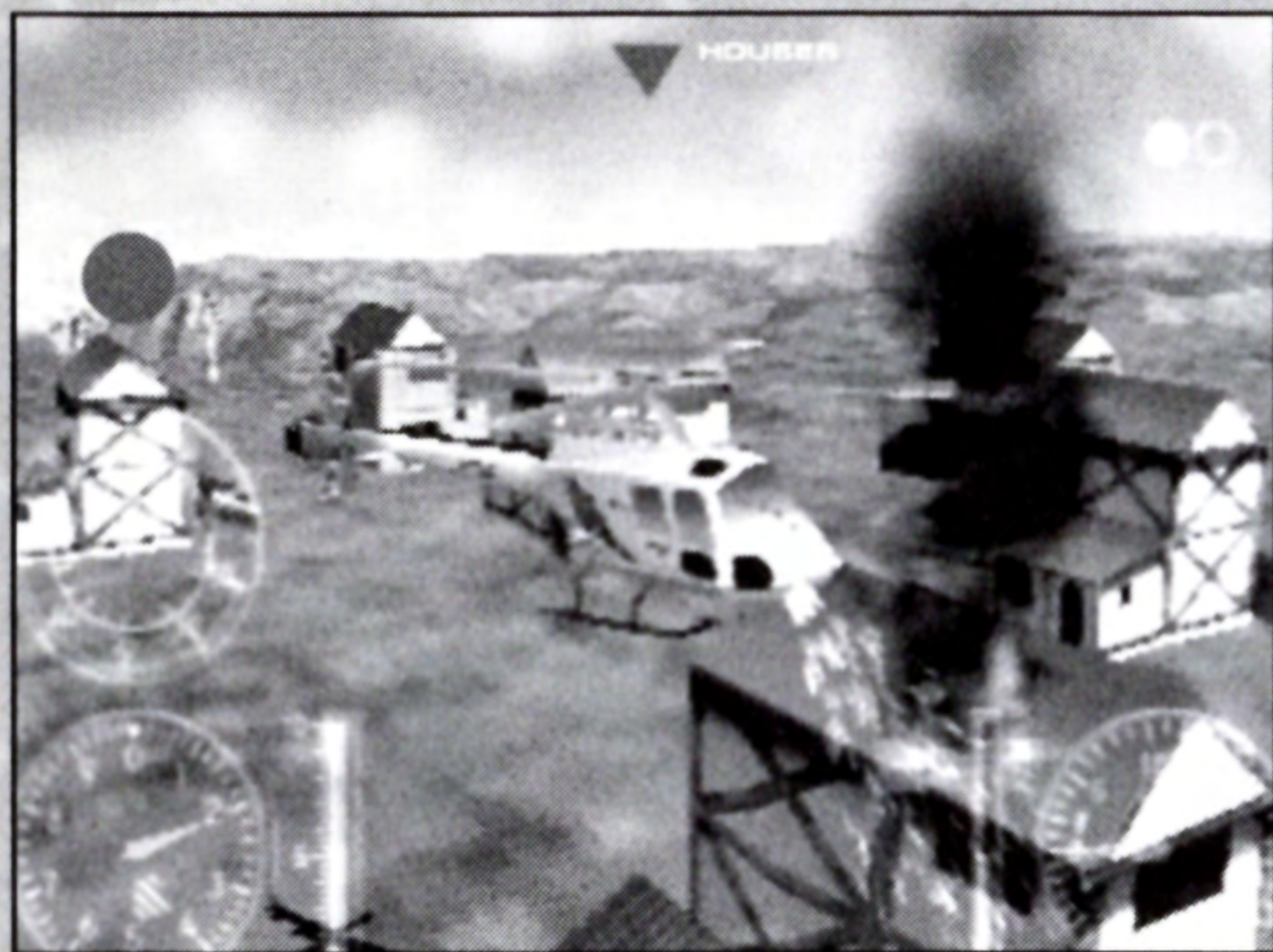
How to unload

To unload a container within the specified space, keep hovering over the area until the swinging stops. Slowly bring down the container until it touches the ground. Once the container touches the ground, lower the altitude until the rope loosens and it's ready to unlock. Make sure to pay close attention to the Climb Indicator to avoid the crash.

To pull up, stop the hook and keep hovering. Take up the rope and slowly bring it down until the hook touches the container. Pull it up and it's ready to transport.

To unload, keep hovering and slowly lower the altitude until the rope loosens.

Types of Missions 1.4



FIRE EXTINGUISHING MISSION

After take-off, fly to the fire spot where it originated. spray foam over all buildings where the fire is breaking out. This mission is completed after all the fires are put out. Extinguishing a fire while hovering will test your flight techniques.

How to spray

Press and hold the **F2** button to spray foam. When foam is sprayed while the helicopter is in motion, the foam will get scattered all over. Make sure to keep hovering and to aim exclusively at the targeted building. Continue spraying for a few seconds until the fire is completely extinguished.

Types of Missions 1.5

RESCUE MISSION

Fly to the target destination and rescue people who are lost in the mountains or who are drawn in at the river by pulling them up with a helicopter. Since you have to rescue people who are in hard to reach mountains and drifting in aggressive rivers, this is considered the most difficult mission.



Certain helicopters hold a limited amount of people. If more people need to be rescued and the helicopter does not provide enough space, it may be necessary to go back to the helicopter pad and drop them off. Then you can resume the rescue process.

How to rescue
Keep hovering over the immediate target. Control the altitude of the helicopter until the rescuer touches the target (one to be rescued). The trick here is to keep the rescuer as still as possible. Once the rescuer reaches out to the target, pullout is done automatically.

Credits

Conspiracy Entertainment Corp.

www.conspiracygames.com

Executive Producer for
Rescue Copter™
Dave Hoffman

President
Sirus Ahmadi

VP of Publishing
Peter Bergstrom

Director of Marketing & PR
Vince Matthews

Creative Director
Richard Germinaro

Assistant Graphic Designer
Saundra Vo

Website Project Manager
Tiffany Wattanaporn

Special Thanks
Danny Kolker
Dan Jevons
Keith Tanaka
Laurie and Valerie Hoffman
Hiromi Kesameru

Notes

Notes

Warranty and Service Information

CRAVE ENTERTAINMENT, Inc. warrants to the original purchaser of this CRAVE ENTERTAINMENT, Inc. product that the software storage medium in the product is free from defects in material and workmanship for a period of ninety (90) days (unless prohibited by applicable law) from the date of purchase. The CRAVE ENTERTAINMENT, Inc. software program in this product is sold "AS IS" and without any expressed or implied warranties for losses or damages of any kind resulting from use of the software program. If the CRAVE ENTERTAINMENT, Inc. product fails to comply with this limited warranty, CRAVE ENTERTAINMENT, Inc. agrees to either repair or replace, at its option, free of charge, the non-complying product, provided the product is returned by the original purchaser, postage paid, with proof of purchase to CRAVE ENTERTAINMENT, Inc. at the address set forth below. When returning the product for warranty replacement, please send the original product disc(s) only in protective packaging and include: (1) a photocopy of your dated sales receipt; (2) your name and return address typed or clearly printed; and (3) a brief note describing the defect, the problem(s) you are encountering and the system on which you are running the product. If you are returning the product after the 90-day warranty period, but within one year after the date of purchase, please include check or money order for \$15 U.S. currency per disc replacement. Note: Certified mail recommended.

In the U.S. send to:
Warranty Replacements
Crave Entertainment, Inc.
19645 Rancho Way
Rancho Dominguez, CA 90220

This warranty shall not be applicable and shall be void if the defect in the CRAVE ENTERTAINMENT, Inc. product has arisen through abuse, unreasonable use, mistreatment, neglect or reasonable wear and tear. THIS WARRANTY IS IN LIEU OF ALL OTHER WARRANTIES AND NO OTHER REPRESENTATIONS OR CLAIMS OF ANY NATURE SHALL BE BINDING ON OR OBLIGATE CRAVE ENTERTAINMENT, INC. ANY IMPLIED WARRANTIES APPLICABLE TO THIS SOFTWARE PRODUCT, INCLUDING WARRANTIES OF MERCHANTABILITY AND FITNESS FOR A PARTICULAR PURPOSE, ARE LIMITED TO THE NINETY (90) DAY PERIOD DESCRIBED ABOVE. IN NO EVENT WILL CRAVE ENTERTAINMENT, INC. BE LIABLE FOR ANY DIRECT, SPECIAL, INCIDENTAL OR CONSEQUENTIAL DAMAGES RESULTING FROM POSSESSION, USE OR MALFUNCTION OF THE CRAVE ENTERTAINMENT, INC. SOFTWARE PRODUCT.

Some states do not allow limitations as to how long an implied warranty lasts and/or exclusions of liability may not apply to you. This limited warranty gives you specific legal rights and you may also have other rights, which vary, from state to state.

Customer Support

You may need only simple instructions to correct a problem with your product. Call the Customer Service Line at 310-687-5432, 9:00am-5:00pm.

Now Available

More Premium Value Products From Conspiracy Entertainment!



Raise your own Creatures!
Collect and trade them with friends using the PlayStation Memory Card.

- Three worlds to populate and explore.
- Features Cyber Life technology and Digital DNA - parents pass traits - good or bad - to their Creature kids.

Protect your Sea-Monkeys from the dangers of the deep. Abundant aquatic environments filled with treacherous sea life.

- Explore 70 undersea levels.
- Easy to use on-screen tutorials.
- Bonus puzzles and hidden levels.

© 2003 Crave Entertainment, Inc. All rights reserved. Crave Entertainment and the Crave Entertainment logo are either trademarks or registered trademarks of Crave Entertainment, Inc. in the U.S. and other countries. All other trademarks and copyrights are the property of their respective holders.

© 2002 Conspiracy Entertainment Corp. 604 Santa Monica Blvd. Santa Monica CA, 90401
© 2002 AQUASYSTEM Co., Ltd. Sublicensed by NEC Interchannel to Conspiracy Entertainment.

CRAVE
ENTERTAINMENT
www.cravegames.com

Licensed by Sony Computer Entertainment America for use with the PlayStation game console. PlayStation and the PlayStation logos are registered trademarks of Sony Computer Entertainment Inc. The ratings icon is a trademark of the Interactive Digital Software Association. Manufactured and printed in the U.S.A. THIS SOFTWARE IS COMPATIBLE WITH PLAYSTATION GAME CONSOLES WITH THE NTSC U/C DESIGNATION. U.S. AND FOREIGN PATENTS PENDING.

